

EMC 4 Cable Glands Brass




Brass cable gland for EMC

- Vibration proof EMC performance.
- Long-lasting contact by high definition contact spring.
- Moving spring contact offers reduced risk of sheath damage.
- Easy assembly and disassembly of cable. Spring closes and opens according to fastening of the cap.
- Easy movement of cable as long as not fastened.
- High quality strain relief and sealing, reliable performance for EMC applications.
- Up-to-date international approvals.

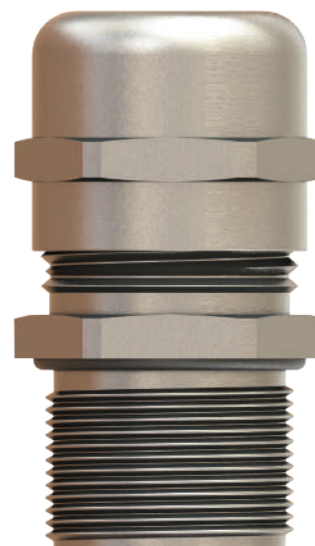
Technical Details

Material	Body, Cap	Brass Nickel plated	
	Seal	CR (Chloroprene)	
	Clamping Insert	PA 6 (Polyamide 6)	
	Contact Spring	Special Copper Alloy	
	O-Ring	NBR	
Ingress Protection Rating	IP 68 - 5 Bar, 30 min		
Flammability	V2 according to UL94		
Operating Temperature	Permanent	-20 °C to +100 °C	Intermittent
			-40 °C to +150 °C
Thread Type	<ul style="list-style-type: none"> • Metric EN 60423 • PG DIN 40430 • NPT ANSI B1.20.1 • Other thread types also available upon request. 		
Cable Type	Shielded		
Accessories	<ul style="list-style-type: none"> • EMC Lock nuts • Dome plugs • Gaskets (Washers) 		

- Remarks**
- In compliance with DIN EN 62444.
 - We recommend the use of lock nuts and gaskets to ensure IP rating for rough surfaces or through holes.
 - Some approvals do not cover all sizes.
 - O-ring available in Metric and PG threads as a standard. For NPT threads O-ring available upon request.
 - Accessories must be ordered separately.
 - Other lock nut types also available upon request.

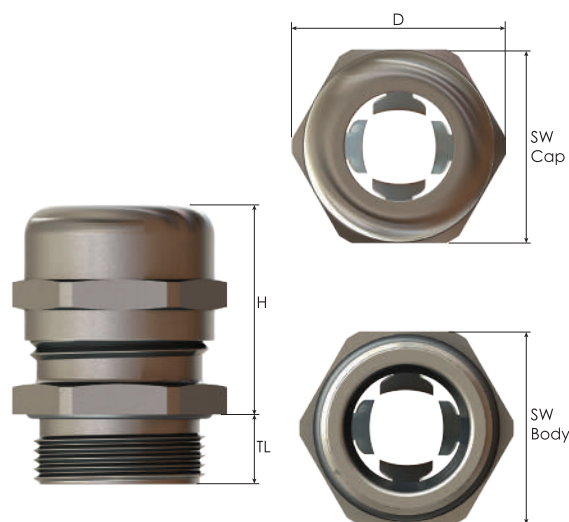
Approvals	Certificate Number	Standards
	40039349	DIN EN 62444
	E-199260	UL514B CSA22.2 No 18.3-12 CSA22.2 No 94.2-1S
TYPE 4x		UL50E
	E-14047	EN62444

For details of approvals, see our website.



Order Coding				
Part Number	-	Gasket (Washer)	EMC Lock Nut	Sealing Plug
Mandatory	-	Option	Option	Option
See table	-	WC Chloroprene WS Silicone	EL Lock nut	P Dome Plug T Dust Plug
Example				
BMEM-E6(M50T)	-	WC	EL	P

EMC 4 Cable Glands Brass



Thread Type **METRIC** acc. to EN 60423

Outer Thread Size (Male)	Clamping Range Ø min-max mm	Shield Diameter Ø min-max mm	Outer Thread Length TL mm	Spanner Width		Outer Ø D mm	max. Height H mm	Part Number	Minimum Order Quantity
				Cap	Body				
M12x1,5	3,0 - 6,5	2,0 - 5,0	6,0	14	14	15,5	30,0	BMEM-ES(M12T)	1000
M16x1,5	5,0 - 10,0	3,5 - 8,0	6,0	20	20	22,0	35,0	BMEM-E1(M16T)	600
M20x1,5	6,0 - 12,0	4,5 - 10,0	6,0	22	22	24,5	33,5	BMEM-E2S(M20T)	500
	7,5 - 14,0	5,5 - 11,5	8,0	24	24	26,8	41,5	BMEM-E2(M20T)	350
M25x1,5	10,0 - 18,0	7,0 - 14,0	8,0	30	30	33,0	44,5	BMEM-E3(M25T)	200
M32x1,5	16,0 - 25,0	12,0 - 20,0	9,0	40	40	44,5	55,0	BMEM-E4(M32T)	100
M40x1,5	22,0 - 32,0	18,0 - 27,0	9,0	50	50	55,5	62,5	BMEM-E5(M40T)	50
M50x1,5	30,0 - 38,0	26,0 - 34,0	9,0	58	58	64,0	74,0	BMEM-E6(M50T)	40
	34,0 - 44,0	30,0 - 40,0	14,0	64	68	75,0	60,0	BMEM-E7(M63T)	40
M63x1,5	37,0 - 53,0	33,0 - 49,0	10,0	75	75	83,0	75,0	BMEM-E7L(M63T)	20

Thread Type **NPT** acc. to ANSI B1.20.1

Outer Thread Size (Male)	Clamping Range Ø min-max mm	Shield Diameter Ø min-max mm	Outer Thread Length TL mm	Spanner Width		Outer Ø D mm	max. Height H mm	Part Number	Minimum Order Quantity
				Cap	Body				
NPT 1/4"	3,0 - 6,5	2,0 - 5,0	11,5	14	15	16,5	30,0	BNEM-ES(NPT1/4"T)	1000
NPT 3/8"	5,0 - 10,0	3,5 - 8,0	11,5	20	20	22,0	35,0	BNEM-E1(NPT3/8"T)	600
	6,0 - 12,0	4,5 - 10,0	15,0	22	22	24,5	39,5	BNEM-E2S(NPT1/2"T)	500
NPT 1/2"	7,5 - 14,0	5,5 - 11,5	15,0	24	24	26,8	41,5	BNEM-E2(NPT1/2"T)	350
	10,0 - 18,0	7,0 - 14,0	15,0	30	30	33,0	43,5	BNEM-E3(NPT3/4"T)	200
NPT 1"	16,0 - 25,0	12,0 - 20,0	20,0	40	40	44,5	54,0	BNEM-E4(NPT1"T)	100
NPT 1 1/4"	22,0 - 32,0	18,0 - 27,0	20,0	50	50	55,5	63,0	BNEM-E5(NPT1 1/4"T)	50
NPT 1 1/2"	30,0 - 38,0	26,0 - 34,0	22,0	58	58	64,0	73,0	BNEM-E6(NPT1 1/2"T)	40
	34,0 - 44,0	30,0 - 40,0	22,0	64	68	75,0	73,0	BNEM-E7(NPT2"T)	40

Thread Type **PG** acc. to DIN 40430

Outer Thread Size (Male)	Clamping Range Ø min-max mm	Shield Diameter Ø min-max mm	Outer Thread Length TL mm	Spanner Width		Outer Ø D mm	max. Height H mm	Part Number	Minimum Order Quantity
				Cap	Body				
PG 7	3,0 - 6,5	2,0 - 5,0	6,0	14	15	16,5	30,0	BSEM-E1(PG7T)	1000
PG 11	5,0 - 10,0	3,5 - 8,0	6,0	20	21	23,0	35,0	BSEM-E3(PG11T)	600
PG 13,5	6,0 - 12,0	4,5 - 10,0	6,5	22	22	24,5	33,5	BSEM-E4(PG13,5T)	500
PG 16	7,5 - 14,0	5,5 - 11,5	6,5	24	25	27,5	41,5	BSEM-E5(PG16T)	350
PG 21	10,0 - 18,0	7,0 - 14,0	7,0	30	32	35,5	44,5	BSEM-E6(PG21T)	200
PG 29	16,0 - 25,0	12,0 - 20,0	9,0	40	40	44,5	55,0	BSEM-E7(PG29T)	100
PG 36	22,0 - 32,0	18,0 - 27,0	9,0	50	50	55,5	62,0	BSEM-E8(PG36T)	50
PG 42	30,0 - 38,0	26,0 - 34,0	12,0	58	60	66,5	74,5	BSEM-E9(PG42T)	40
	34,0 - 44,0	30,0 - 40,0	14,0	64	68	75,0	60,5	BSEM-E10(PG48T)	40